

MOBILE CRANE PM 450

Technical qualities :

The mobile crane is conceived to move on construction areas, thanks to its solid tyres that enable loads to be easily shifted across uneven floors.

Manufactured with an arm 5 positions extendable and supplied with 13 removable counterbalance weights for easy transport. Allow to reach at the front of the wheel enough distance to lift various loads.

Built with a manual hydraulic group, reliable and very easy to use. The mobile crane is equipped with an handle which makes the arm of the crane lift and down.

The outside dimension is narrow, for a very compact equipment and able you to move it everywhere, especially through doors. The main mast is foldable, easy to transport and simple to assemble or disassemble.

The PM 450 mobile crane can thus be used for lifting and removing materials on buildings floors, without any structural interventions on it ⁽²⁾.



Ref. 300 824

The most reliable Mobile Crane PM450 to lift heavy and bulky loads on construction areas.

- Perfect to use in or outside

- Robust and useful in confined areas

- You can use the mobile crane to lift and carry materials on the floors of buildings, without intervention on the equipment

- You can use the mobile crane for the construction areas as glazing, lifting, handling, etc...

On request : manual or electrical hoist

Characteristics :

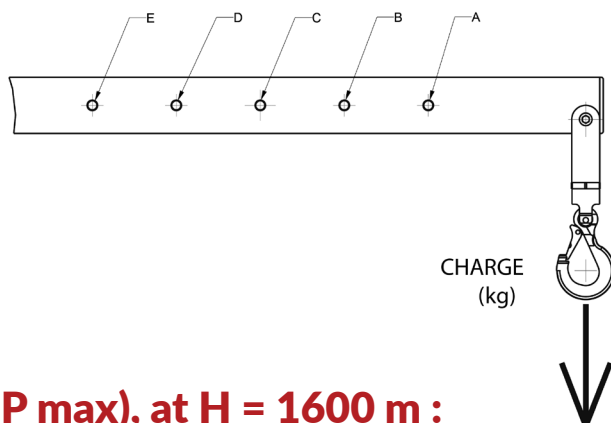
- Maximum load : 450 kg ⁽¹⁾
- Maximum hook height : 2700 mm ⁽¹⁾
- Distance at the front of the wheel : 1000 mm ⁽¹⁾
- Off roads-tyres : \varnothing 400 mm
- Rear pivoting wheels with break : \varnothing 250 mm
- Articulated hook with safety latch
- 13 removable counterbalance weight : 22 kg /unit
- Weight without counterweight : 159 kg
- Weight with counterweight : 447 kg

⁽¹⁾ The capacity load, reach at the front of the wheels and the lifting height depend on the position of the jib. Please refer to abacus before using the mobile crane.

⁽²⁾ On request : manual or electrical hoist.

Maximum Capacity of the load (CMU) :

	A	B	C	D	E
CMU (kg)	450	390	330	280	260

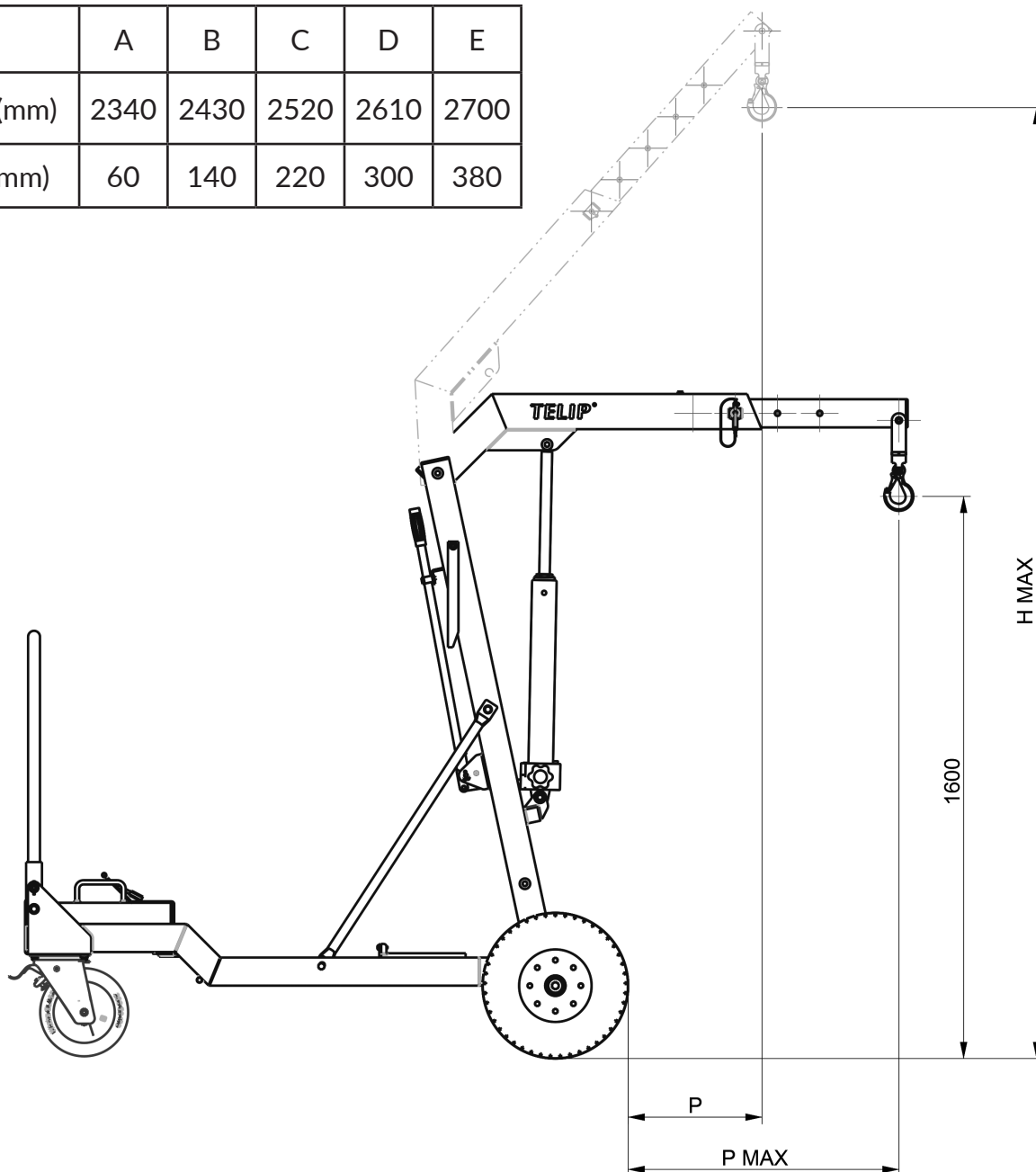


Maximum Distance of the front of wheels (P max), at H = 1600 m :

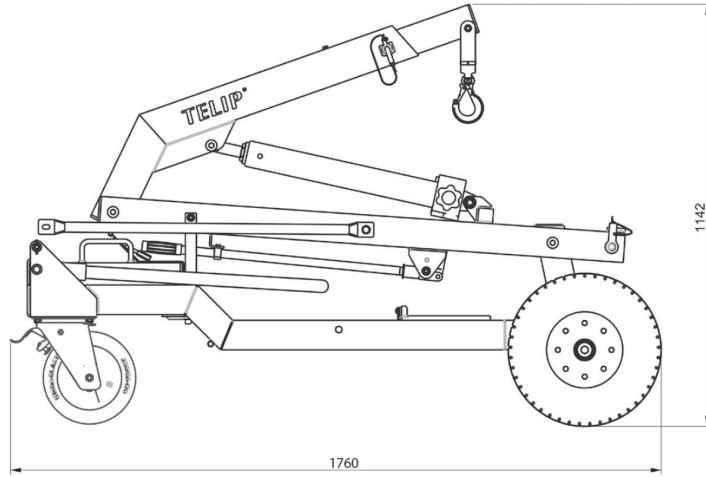
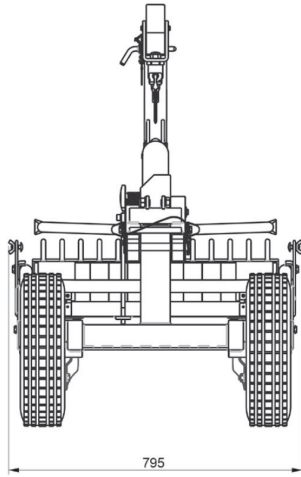
Position of the arm	A	B	C	D	E
Height (mm)	520	640	760	880	1000

Maximum Lifting Height (H max) :

Arm position	A	B	C	D	E
Maximum height (mm)	2340	2430	2520	2610	2700
Reach at H max (mm)	60	140	220	300	380

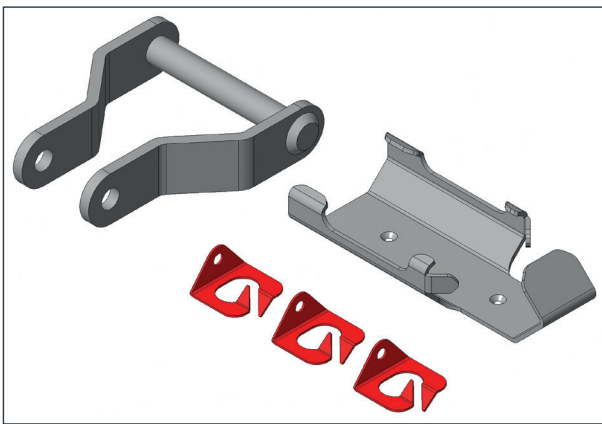


Drawing Dimensions :



Accessory :

Adaptation kit for PALANBOX : **Ref. 300 932**



The PALANBOX allows the lifting of loads up to 160kg or 230kg, it is fitted to replace the original lifting hook.

The control bracket allows the operator to have quick and efficient access to the accessory controls.

Thanks to the cable passes, the operator has no longer to worry about the inconvenience caused by the passage of the power cables.

The kit includes:

- A galvanized steel adapter
- A galvanized steel control support
- 3 epoxy painted sheet steel cable glands
- The screws required for assembly

The kit is mounted quickly on the stem and with basic tools :
Assembly instructions included.



The PALANBOX electric winch is not included in the adaptation kit.

For more information refer to the PALANBOX product data sheets.

Terms of use

The user is responsible for defining the products to be adapted to its own use. TELIP takes charge of submitting accurate and updated information. However, as part of the continuous improvement of its products, TELIP reserves the right to proceed with frequent modifications without warning. Therefore, TELIP cannot guarantee the accuracy and current reality of information on its products. All transactions are subject to general terms and conditions of sales and transportation. These conditions are available upon request and downloadable on our website www.telip.fr.

TELIP
MANUTENTION ET LEVAGE

2, rue Andrée Reigner - Z. I. La Bougeoire
35 130 La Guerche de Bretagne
FRANCE

Tél. : 02 99 96 17 16
Fax : 02 99 96 17 26

contact@telip.fr
www.telip.fr