

## MOBILE CRANE PM 200

### Technical qualities :

The crane PM 200 is the most compact crane. Conceived to move on construction areas, thanks to solid tyres that enable loads to be easily shifted across uneven floors.

Manufactured with an, arrow 3 positions extendable and supplied with 9 removable counterbalance weights for easy transport. Allow to reach at the front of the wheel enough distance to lift various loads.

Built with a manual hydraulic group, reliable and very easy to use. The crane is equipped with an handle which makes the arm of the crane lift and down.

The outside dimension is narrow, for a very compact equipment and able you to move it everywhere, especially through doors. The main mast is foldable, easy to transport and simple to assemble or disassemble.

The PM 200 mobile jib crane can thus be used for lifting and removing materials and equipment, on buildings floors or during underground work. It also allows numerous workshop handling operations <sup>(2)</sup>.



### Ref. 300 820

*The most reliable Mobile Crane PM200 to lift heavy and bulky loads on construction areas.*

*- Perfect to use in or outside*

*- Robust and useful in confined areas*

*- You can use the mobile crane to lift and carry materials in the floors of buildings, without intervention on the equipment*

*- You can use the mobile crane for the construction areas as glazing, lifting, handling in workshop, etc..*

*On request : manual or electrical hoist*

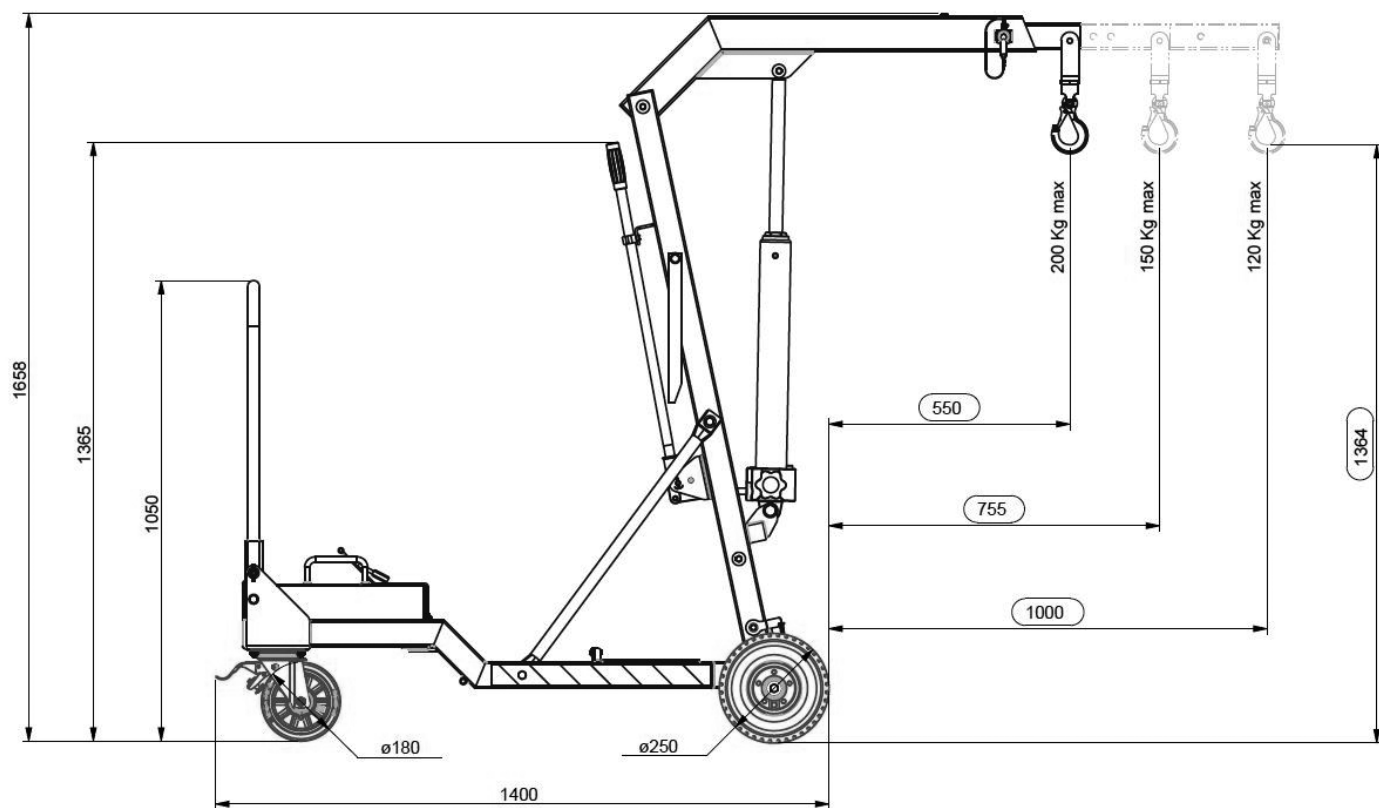
### Characteristics :

- Maximum load : 200 kg <sup>(1)</sup>
- Maximum hook height : 2380 mm <sup>(1)</sup>
- Distance at the front of the wheel : 1000 mm <sup>(1)</sup>
- Off roads-tyres : ø 250 mm
- Rear pivoting wheels with break : ø180 mm
- Articulated hook with safety latch
- 9 removable counterbalance weight : 22 kg /unit
- Weight without counterweight : 93 kg
- Weight with counterweight : 292 kg

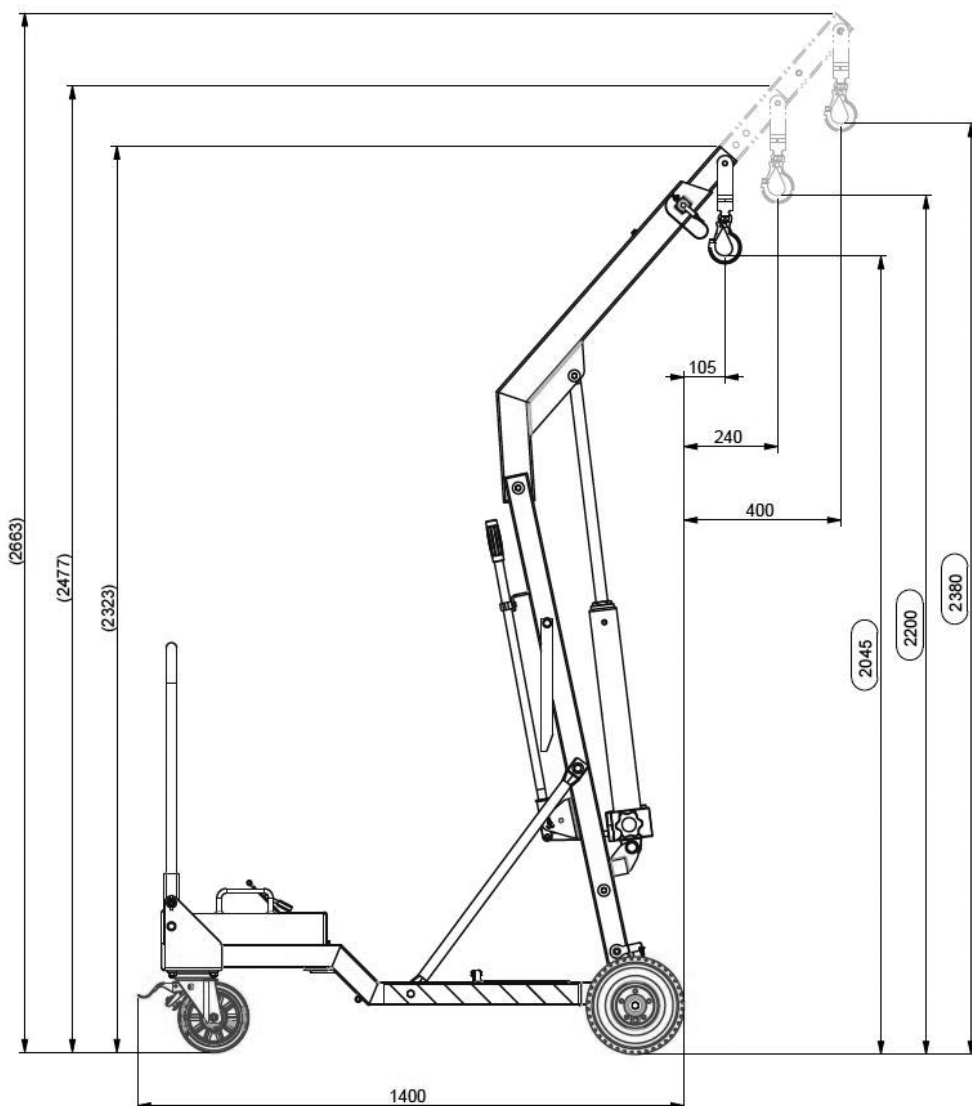
<sup>(1)</sup> The capacity load, reach at the front of the wheels and the lifting height depend on the position of the jib. Please refer to abacus before using the mobile crane.

<sup>(2)</sup> On request : manual or electrical hoist.

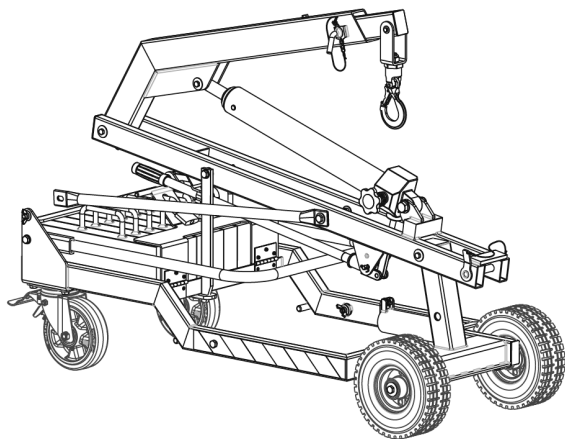
## Maximum Capacity Load (CMU) depending on the position of the jib :



## Maximum Lifting Height (H max):



## Transport position :



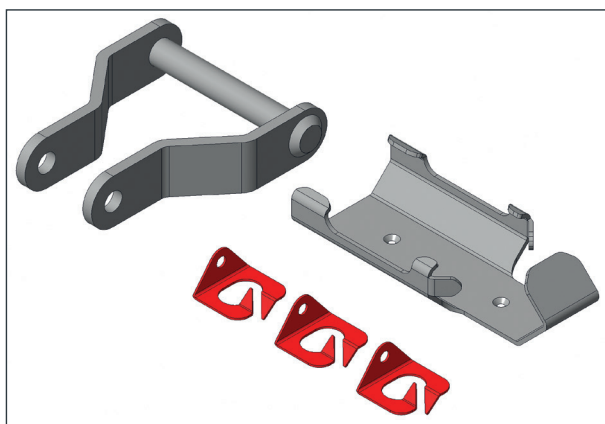
*In order to facilitate transport and installation on site, the main parts of the machine are foldable.*

*The counterweights are easily removable and can be stored separately.*

- Dimensions in transport position:  
1400 x 579 x 1013 mm (L x W x H)

## Accessory :

### Adaptation kit for PALANBOX : **Ref. 300 931**



The PALANBOX allows the lifting of loads up to 80kg, it is fitted to replace the original lifting hook.

The control bracket allows the operator to have quick and efficient access to the accessory controls.

Thanks to the cable passes, the operator has no longer to worry about the inconvenience caused by the passage of the power cables.

The kit includes :

- A galvanized steel adapter
- A galvanized steel control support
- 3 epoxy painted sheet steel cable glands
- The screws required for assembly

The kit is mounted quickly on the stem and with basic tools :  
Assembly instructions included.



*The PALANBOX electric winch is not included in the adaptation kit.*

*For more information refer to the PALANBOX product data sheets.*

### Terms of use

The user is responsible for defining the products to be adapted to its own use. TELIP takes charge of submitting accurate and updated information. However, as part of the continuous improvement of its products, TELIP reserves the right to proceed with frequent modifications without warning. Therefore, TELIP cannot guarantee the accuracy and current reality of information on its products. All transactions are subject to general terms and conditions of sales and transportation. These conditions are available upon request and downloadable on our website [www.telip.fr](http://www.telip.fr).

**TELIP**  
MANUTENTION ET LEVAGE

2, rue Andrée Reigner - Z. I. La Bougeoire  
35 130 La Guerche de Bretagne  
FRANCE

Tél. : 02 99 96 17 16  
Fax : 02 99 96 17 26

[contact@telip.fr](mailto:contact@telip.fr)  
[www.telip.fr](http://www.telip.fr)